



MECHANICAL FIXINGS

PRODUCTS & SPECIFICATIONS

BUILT ON COMMON SENSE



Email: info@glassvice.com
Phone: 0800 700 797

Showroom: 24C William Pickering Drive,
Rosedale, 0632, Auckland

www.j-vice.com

NOTES

THE J-VICE RANGE



**BUILT ON
COMMON SENSE**

We have used our extensive industry knowledge building decks and installing balustrades to develop and enhance our J-Vice® range.

Our R&D revealed that a few clever tweaks could add strength and save builders a lot of time and effort.

The range started with the original JV100 and has developed into joist hangers, decking screws and pile to bearer connections. The system also incorporates its sister brand Anchorjak® for a superior feel under foot while on floating platforms.

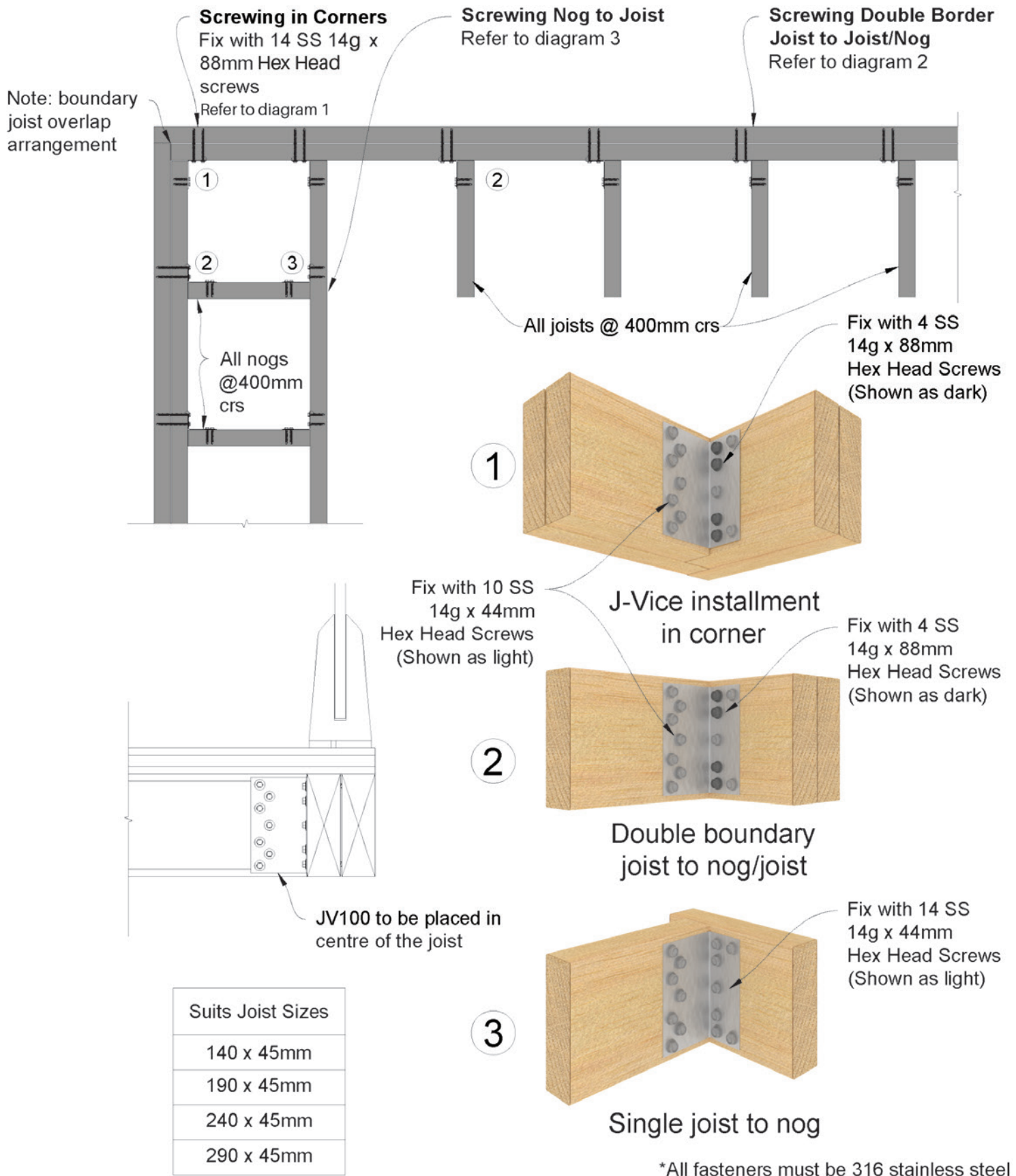
Patent 718944 ©2016 C.V.H.C J-Vice. | Patent pending NZ738681 | Registered Design 423068

Table of Contents

Page:

JV100 Guide	2
JV100 Deck Support/ Joist Hangers	3
M12 Range	4
JVPC80 / JVPC 40	7
12kN/6kN Pile to Bearer Connection Kits	9
AnchorBrac™	10
316 Stainless Steel Timber Decking Screw Guide	12
Decking Hardware Solutions	13
Anchorjak® Adjustable Pedestals	14
Floating Tile Solutions	15
Timber Decking Solutions	17
Ground Screws	18
Ground Screw Accessory Systems	19

JV100 Guide



JV100 Deck Support

We use mechanical balustrade fixings that are built for the job; they're faster and easier to install and stronger than standard framing solutions.



J-Vice Range

Product Code

• Stainless	JVD100-DSSS
• Stainless	JVD135-DSSS
• Galvanized	JVD100-DSG

- Approved alternative solution to NZS3604:2011 for balustrade fixings.
- Save half the time vs conventional methods.
- Suitable for single/double/triple boundaries.
- Placed on only one side of the joist.
- Replaces strapping and bolting and CPCs top and bottom.
- Patented tooth, hit once, screw once.
- Patented 88 degree angle means it's directly under tension once fastened.

304 Stainless Steel or Galvanized
Internal use only for Galvanized vice.



Joist Hangers

We know joist hangers can be a nuisance to line up. That's why ours have teeth and a snap-off guide to make installation a breeze.



Joist Hanger Size Range

Product Code

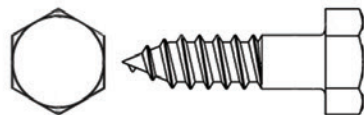
• 90mm Stainless	JVJH90SS
• 140mm Stainless	JVJH140SS
• 140mm Galvanized	JVJH140G
• 190mm Stainless	JVJH190SS
• 190mm Galvanized	JVJH190G
• Double 190mm Stainless	JVJHD190SS
• Double 190mm Galvanized	JVJHD190G

- Easy to install teeth, line up and tap with a hammer.
- Snap off bottom tab to fit perfectly on the stringer.
- 90mm/140/190 sizes available.
- Fastened with 316 Stainless Steel, 10x35mm Tek screws.

Galvanized or 316 Stainless Steel

J-Vice® M12 Range

M12 Coachscrews 316 Stainless Steel - Metric (DIN 571)



Hex head size A/F : 19
Pitch : 1.75
Thread Length : 0.6 x length

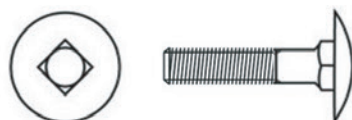
Size/Range

M12 x 75	JVM12CS-75SS
M12 x 100	JVM12CS-100SS
M12 x 120	JVM12CS-120SS
M12 x 150	JVM12CS-150SS
M12 x 180	JVM12CS-180SS
M12 x 220	JVM12CS-220SS
M12 x 240	JVM12CS-240SS



Product Code

M12 Coachbolts Galvanized - Metric (DIN 603)



Head diameter : 30
Pitch : 1.75
Square A/F : 12
Thread Length for bolts < 125mm : 30
Thread Length for bolts 125 - 200mm : 36

Size/Range

M12 x 75	JVM12CB-75G
M12 x 100	JVM12CB-100G
M12 x 140	JVM12CB-140G
M12 x 160	JVM12CB-160G
M12 x 180	JVM12CB-180G
M12 x 200	JVM12CB-200G



Product Code

Bugle Screws

Size/Range

14G Ruspert	100mm (JVBU100RUS), 125mm (JVBU125RUS) and 150mm (JVBU150RUS)
14G 304 Stainless	100mm (JVBU100304SS), 125mm (JVBU125304SS) and 150mm (JVBU150304SS)
14G 316 Stainless	100mm (JVBU100316SS), 125mm (JVBU125316SS) and 150mm (JVBU150316SS)



M12 Fasteners and Washers



Threaded Rod - 316SS

Size/Range	Product code
M12 x 1m	JVM12TRSS



Square Washer 316SS or Galvanized

Size/Range	Product code
M12 50x50x3	JVM12SQWSS
M12 50x50x3	JVM12SQWG



Hex Nut - 316SS or Galvanized

Size/Range	Product code
M12 316SS	JVM12HNSS
M12 Galvanized	JVM12HNG

M12 Engineering Bolts



Length (mm)	316 Stainless Steel	Galvanized Steel
Size/Range	Product Code	Product Code
M12 x 65	JVM12B-65SS	JVM12B-65G
M12 x 70	JVM12B-70SS	JVM12B-70G
M12 x 90	JVM12B-90SS	JVM12B-90G
M12 x 100	JVM12B-100SS	JVM12B-100G
M12 x 110	JVM12B-110SS	JVM12B-110G
M12 x 120	JVM12B-120SS	JVM12B-120G
M12 x 130	JVM12B-130SS	JVM12B-130G
M12 x 140	JVM12B-140SS	JVM12B-140G
M12 x 150	JVM12B-150SS	JVM12B-150G
M12 x 160	JVM12B-160SS	JVM12B-160G
M12 x 180	JVM12B-180SS	JVM12B-180G
M12 x 200	JVM12B-200SS	JVM12B-200G
M12 x 220	JVM12B-220SS	JVM12B-220G
M12 x 240	JVM12B-240SS	JVM12B-240G
M12 x 260	JVM12B-260SS	JVM12B-260G
M12 x 280	JVM12B-280SS	JVM12B-280G
M12 x 300	JVM12B-300SS	JVM12B-300G

Key Features:

- **High Strength:** Engineered for maximum tensile strength and load-bearing capacity.
- **Corrosion Resistance:** Available in galvanized and stainless steel for various environmental conditions.
- **Precision Manufactured:** Meets industry standards for quality and reliability.
- **Versatile Applications:** Suitable for construction, marine, and outdoor structures.
- **Easy Installation:** Designed for compatibility with standard tools and fasteners.

Applications:

- **Construction:** Ideal for structural joints, load-bearing connections, and timber frames.
- **Marine:** Perfect for harsh, corrosive environments due to superior resistance.
- **Outdoor Structures:** Ensures longevity and durability in exterior applications.

NOTES

JVPC40

J-Vice® **JVPC40** Perlin Cleat Stainless Steel & Galvanized.



4 screws per bracket into large flange & 2 screws into small flange.

Product Range	Product Code
304 Stainless Steel	JVPC40SS
Galvanized	JVPC40G

JVPC 40 Purlin Cleat offers a robust solution for securing purlins and rafters in exposed conditions, effectively countering wind uplift forces. Additionally, these cleats are versatile, serving as reliable connections between exposed rafters and ridge beams in internal applications. They are also employed in tandem with the J-Vice® 6kN Pile to Bearer for secure connections between piles and bearers.

Fastened with 14g 35mm SS 316 or Galvanized Hex Head Screws.

JVPC80

J-Vice® **JVPC80** Perlin Cleat Stainless Steel & Galvanized.



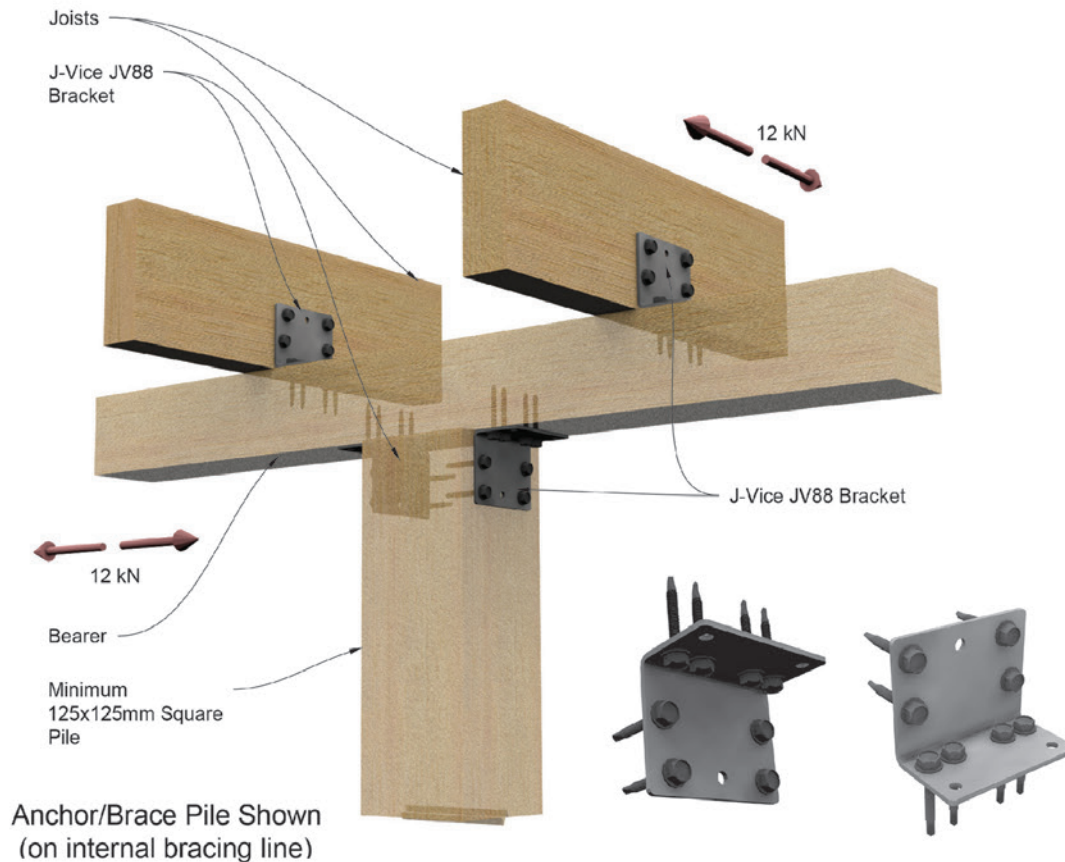
Product Range	Product Code
304 Stainless Steel	JVPC80SS
Galvanized	JVPC80G

- Patented tooth, hit once, screw once.

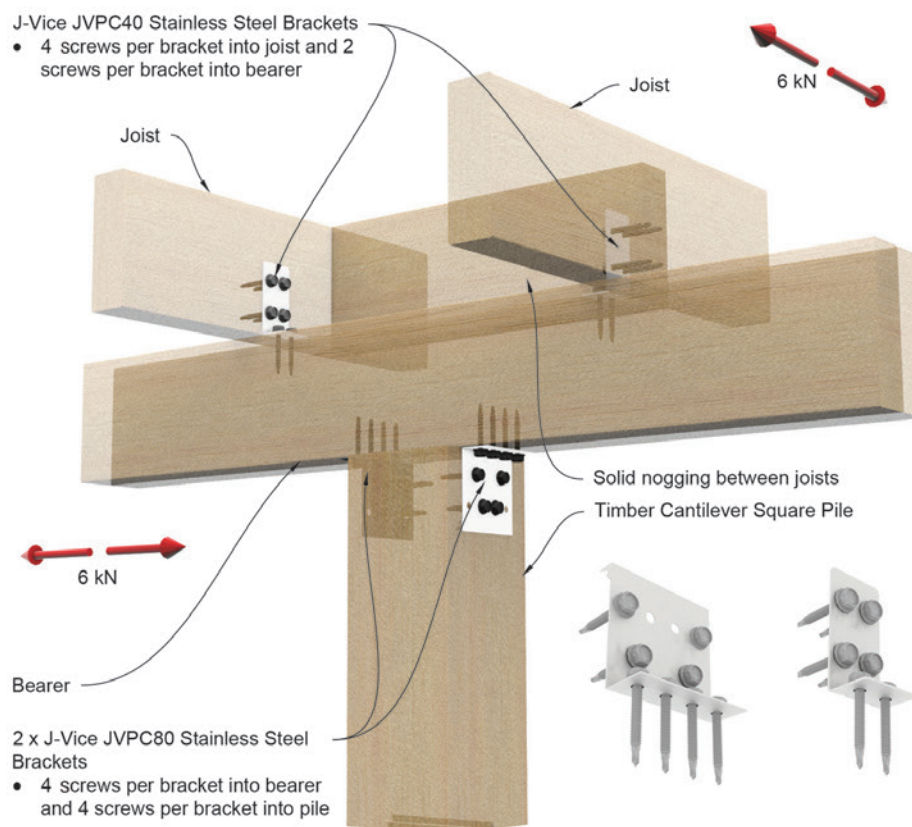
JVPC 80 Purlin Cleat fixes purlins to exposed rafters or trusses to resist wind uplift. They can be used in exposed situations, such as rafter to ridge beam connections. They are also employed within the J-Vice® 6kN Pile to Bearer for secure connections between piles and bearers.

Fastened with 14g 35mm SS 316 or Galvanized Hex Head Screws.

12kN Pile to Bearer Guide



6kN Pile to Bearer Guide



12kN Pile to Bearer Connection Kit

It's about time pile to bearer connections were improved.
Why use nails and twice as many fittings when you can
use screws and half the fittings.

We've stress tested it so you won't stress it : CPENZ Approved Alternative Solution NZS3604:2011



12kN Kit

Product Code

4 x JV88 Brackets and 32 Tek screws

JVD12KN-44TEK

- All screws are 14g x 44mm SS Grade 316 Hex Head Screws.
- Suitable for sea spray zone conditions.
- No more nailing.
- Much faster than conventional fixing.
- No shaving the post.
- Heavy duty, light effort.



304 Stainless Steel



6kN Pile to Bearer Connection Kit



6kN Kit

Product Code

2 x JVPC80 Brackets, 2 x JVPC40

JVD6KN-44TEK

Brackets and 28 Tek screws.

The brackets are Grade 304 Stainless Steel and the screws are Grade 316 Stainless Steel. Both are suitable for sea spray zone conditions.

- Minimum SG8 or better timber piles/bearers and joists required.
- All screws are 14g x 44mm SS Grade 316 Hex Head Screws.

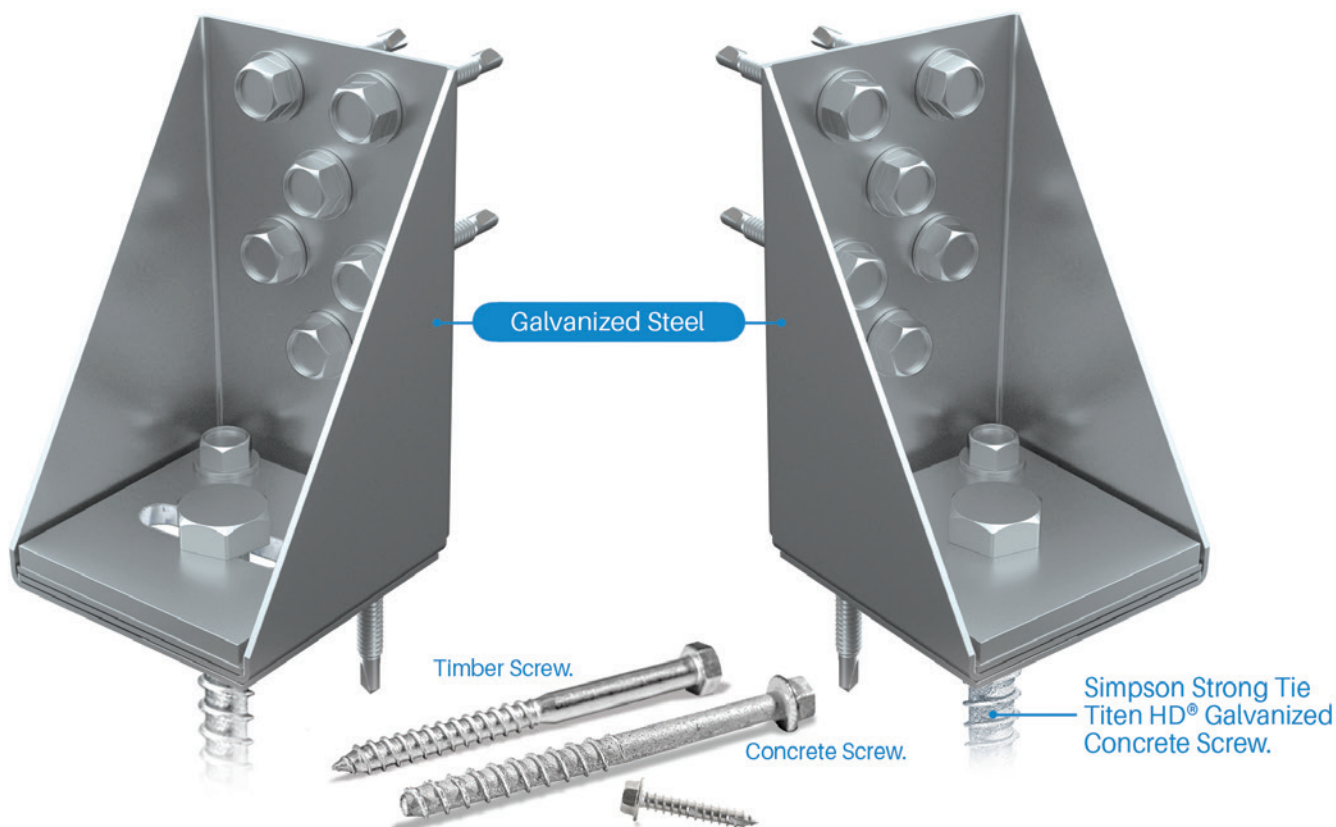
Refer to technical set for details on installation.

304 Stainless Steel

AnchorBrac™ Kit

Timber AnchorBrac™ Kit

Concrete AnchorBrac™ Kit



The following apply to the use of the J-Vice® JV AnchorBrac™ system:

- The J-Vice® JV AnchorBrac™ is intended for use with timber bracing systems such as GIB EzyBrace® Systems or Elephant QuickBrac Systems or equivalent product/system which requires panel end hold down brackets.
- The J-Vice® JV AnchorBrac™ provides holding down capacity for timber posts, beams etc., that are not part of a bracing wall system.
- The J-Vice® JV AnchorBrac™ achieves a characteristic capacity of 15kN when installed to a concrete slab and 12kN when installed to a timber floor.
- All timber-framed floor construction and framing member sizes must be in accordance with NZS3604:2011 or SED by others.
- Concrete slab construction must be in accordance with NZS3604:2011 or SED by others.
- The installation of the proprietary anchor must be in accordance with the manufacturer's technical literature.
- The timber-framed structure is required to have minimum SG8 properties and have an in-service moisture content < 16%.
- This system verifies the J-Vice® JV AnchorBrac™ System for vertical direction loading only (uplift).
- The JV AnchorBrac™ is only applicable for All Zones or Closed environment as defined in Table 4.1 NZS 3604:2011.

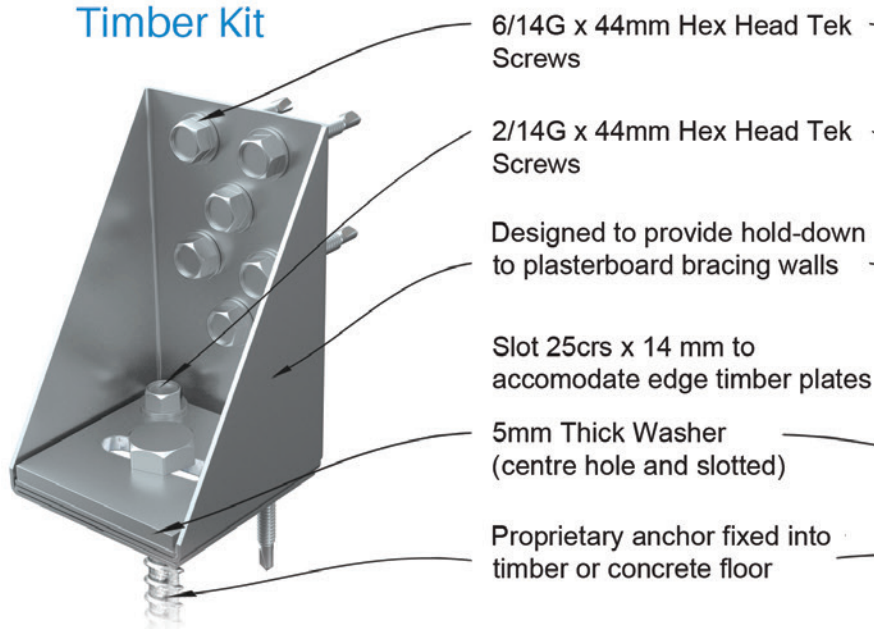
Thinkers, Makers, Doers.

GLASS VICE®

Email : info@glassvice.com | Phone : 0800 700 797 | Showroom : 24C William Pickering Drive, Rosedale, 0632, Auckland

AnchorBrac™ Guide

Timber Kit

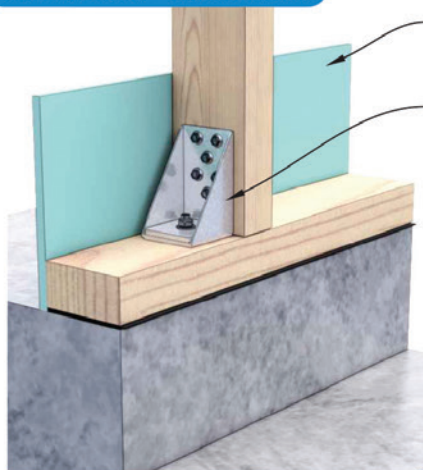


Concrete Kit



Concrete Kit

Concrete Floor - External Wall

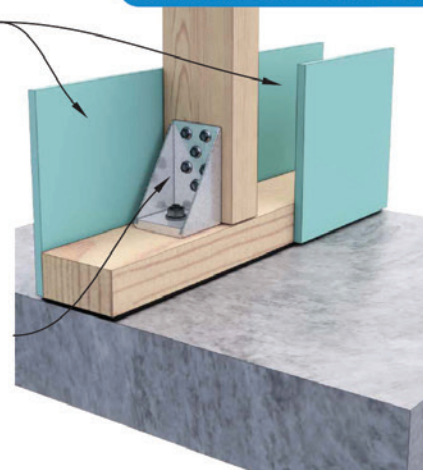


Plasterboard lining. Refer manufacturer's data for installation requirements.

JV AnchorBrac™ set in to maintain edge distance requirements in accordance with the proprietary fixing manufacturer's specifications. Proprietary anchor used with JV AnchorBrac™ is rated for 15kN.

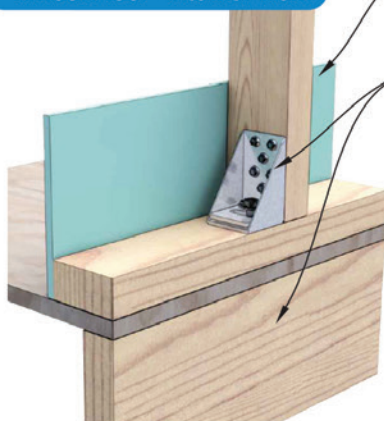
JV AnchorBrac™ shall be fixed centrally to wall frame. Proprietary anchor used with JV AnchorBrac™ is rated for 15kN.

Concrete Floor - Internal Wall



Timber Kit

Timber Floor - Internal Wall



Plasterboard lining. Refer manufacturer's data for installation requirements.

JV AnchorBrac™, slotted, shall be fixed centrally over a solid joist using an M12 x 180mm coachscrew (minimum 105mm embedment) or a proprietary anchor rated for 12kN.

Fixed centrally to joists or over a solid blocking provided the blocking is adequately fixed to the joists.

Timber Floor - External Wall



316 Stainless Steel Timber Decking Screws Guide



It's common sense to have your decking screw pull the decking board into the joists, rather than push it up.

Little Tweak Big Difference.

- The screws are designed to pull the boards down into the joists rather than push the boards up.
- Place once, screw once.
- Cost effective.
- 65mm Small Head Star Drive.
- 80mm Large Head Star Drive.
- Made from 316 Stainless Steel



Decking Hardware Solutions

Decking Screws



65mm Star Drive Deck Screws 316



JDV T20 Star Drive Bit for 65mm screws



Counter Sunk Drill Bit Kit for 65mm Deck Screws



80mm Star Drive Deck Screws 316



JDV T25 Star Drive Bit for 80mm screws



Counter Sunk Drill Bit Kit for 80mm Deck Screws

Decking Screw Size/Product Range

Product Code

• 65mm Star Drive Deck Screws	JVD65DSSS
• 80mm Star Drive Deck Screws	JVD80DSSS
• 65mm Star Drive Bit	JVD202
• 80mm Star Drive Bit	JVD208
• 65mm Counter Sunk Drill Bit Kit	JVD205
• 80mm Counter Sunk Drill Bit Kit	JVD210

Plasterboard Screws

Plasterboard Screws | Zinc Coated

32mm | 6 Gauge | 1000 Piece

Size Range

Product Code

• Fine Thread	JVSPB-F
• Coarse Thread	JVSPB-C

Fine Thread



Coarse Thread



TEK Screws



JVD025TEKSS



JVD044TEKSS



JVD088TEKSS

TEK Screws

Size/Quantity Range

316 14G Stainless Steel or Galvanized

Product Code

• 25mm	JVD025TEKSS
• 35mm	JVD035TEKSS
• 44mm Stainless Steel	JVD044TEKSS
• 44mm Galvanized	JVD044TEKG
• 88mm Stainless Steel	JVD088TEKSS
• 125mm Stainless Steel	JVD125TEKSS
• TEK Screw Driver (all sizes)	JDV204



Anchorjak® Adjustable Pedestals

ANCHORJAK®
decking levelled up

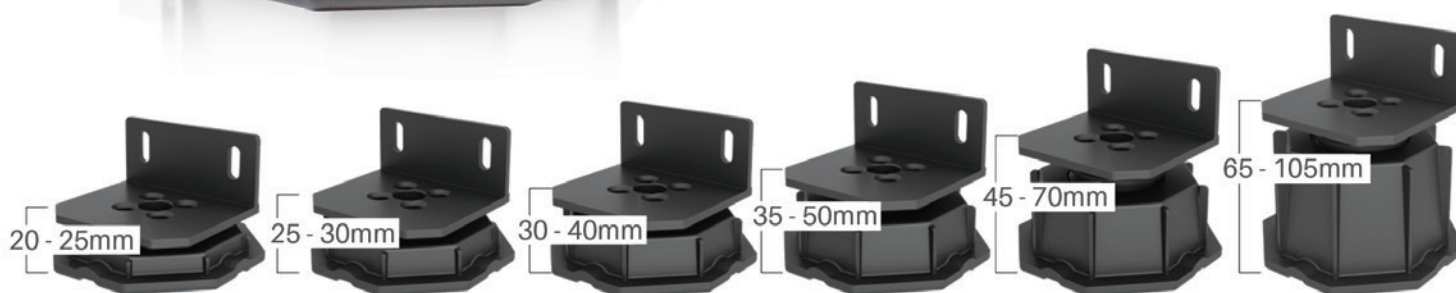


Anchorjak® Adjustable Pedestals

Height Adjustable Size Range

Product Code

• 20 - 25mm	AJ20
• 25 - 30mm	AJ25
• 30 - 40mm	AJ30
• 35 - 50mm	AJ35
• 45 - 70mm	AJ45
• 65 - 105mm	AJ65



**HEIGHT
ADJUSTABLE**



**COMPLETE SYSTEM &
FAST INSTALLATION**



**IDEAL FOR WATERPROOF
MEMBRANES**



**ENGINEERED FOR
COMPLIANCE**



**USE WITH A VARIETY
OF MATERIALS**



“

Floating Tile Solutions

A fully floating solution that requires no adhesive or fixing to the substrate. **Level up your outdoor space.**

”



ANGLE2P/ANGLE4P



Angle Pad
2mm or 4mm

CK-5



GV - Corna Keepa®
5mm



Anchorjak® Extender
60mm

AJSP60

CKT-BL-EXT



Tile Block

CKT-PL4



Tile Spacer 4mm



GV SLAT 025
Satin Black Finish

Aluminium Frame

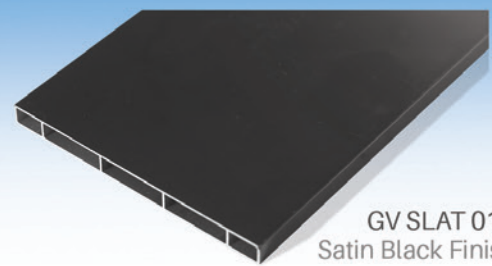
- 50x50mm square tube 4.83m length for tile subframe.



AJ RAIL 6
Satin Black Finish

Tile Block Channel

- For tile subframe to hold the tile blocks and Corna Keepas® - aligns and compresses.



GV SLAT 013
Satin Black Finish

Aluminium Joist

- 200x16mm slat 5m length for joists on screw piles.

Floating Tile Solutions Product Range

Product Code

• Anchorjak® Angle Pad 2 degree Rubber	AJANGLE2R
• Anchorjak® Angle Pad 2 degree Plastic	AJANGLE2P
• Anchorjak® Angle Pad 4 degree Plastic	AJANGLE4P
• Anchorjak® Rubber Adhesive Labels	CKTriangle
• Corna Keepa®	CK-5
• 60mm Anchorjak® Extender	AJSP60
• Tile Block	CKT-BL-EXT
• 4mm Tile Spacer	CKT-PL4
• Aluminium Frame (4.83m length)	GVSLAT 025
• Tile Block Channel (6m length)	AJRAIL 6M
• Aluminium Joist (5m length)	GVSLAT 013

NOTES

Timber Decking Solutions

ALUMINIUM SUBFRAME FOR TIMBER AND COMPOSITE DECKING

Glass Vice Anchorjak® in combination with the 50x30x2mm aluminium channel offers versatile, efficient and tailored solutions, particularly in low-height exterior areas or decking projects.

TIMBER FRAMING FOR BALUSTRADES

Our Anchorjak™ Floating Timber Frame is a specialized engineered system that outperforms traditional framing solutions. A major benefit is its notable reduction in membrane penetrations into the main structure. This allows for both a level floor alignment with the interior combining the balustrade and gutter on the same fascia and a streamlined and space-efficient design solution with visual appeal.

GV X Bat5030-BR-BLK

Floating Timber/Composite Subframes

50x30x2mm | 5m Length



40mm Timber to Aluminium Screws

316 Stainless Steel



House Connector Bracket

Timber Decking Solutions Product Range

- House Connector Bracket - 316 Stainless Steel
- Small Head - 316 SS 10g 4.8x40mm
- Large Head - 316 SS 12g 4.8x40mm
- 50x30x2mm channel (5m length)

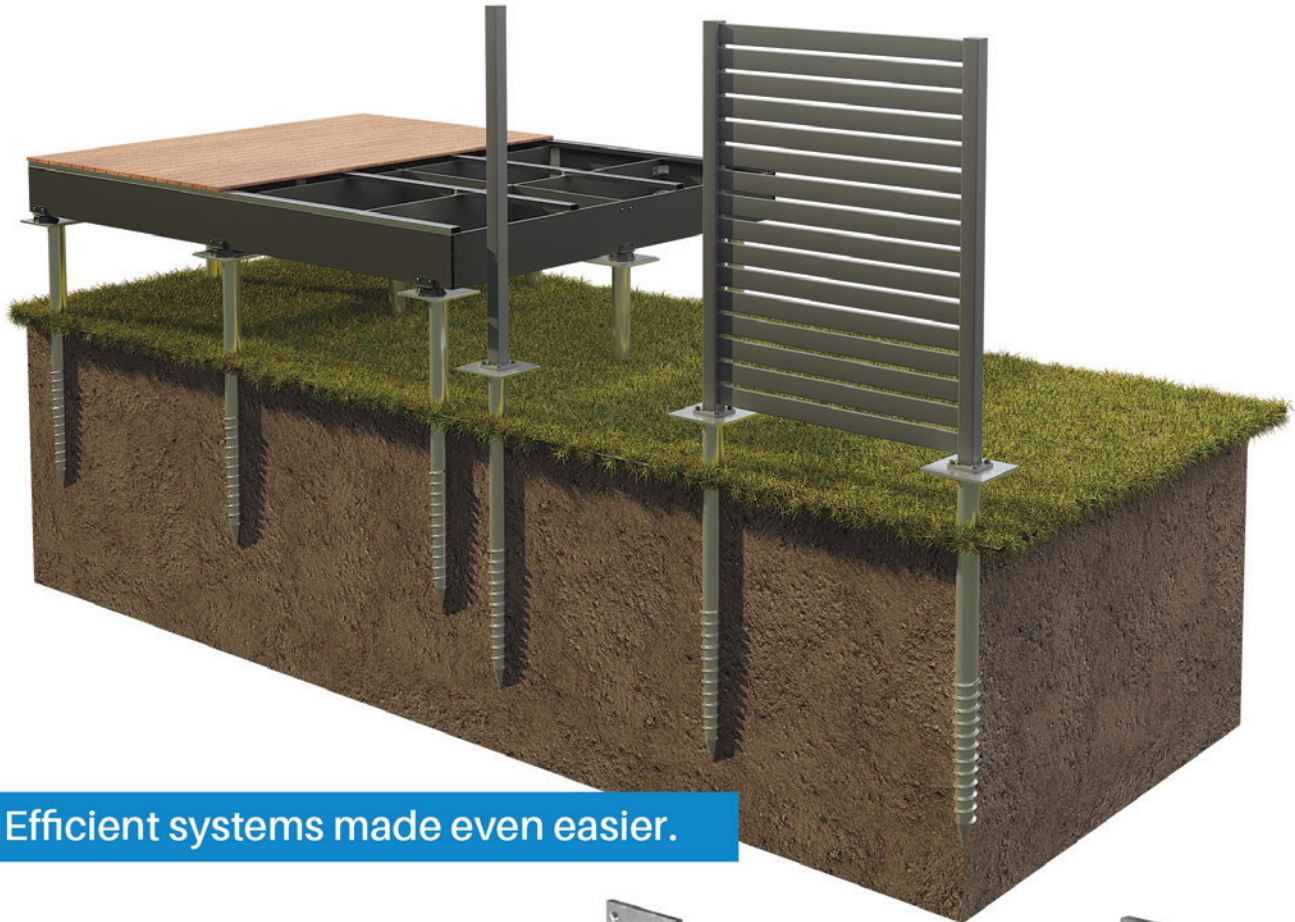
Product Code

JVD010
AJ Screw 001
AJ Screw 002
GV X Bat5030-BR-BLK

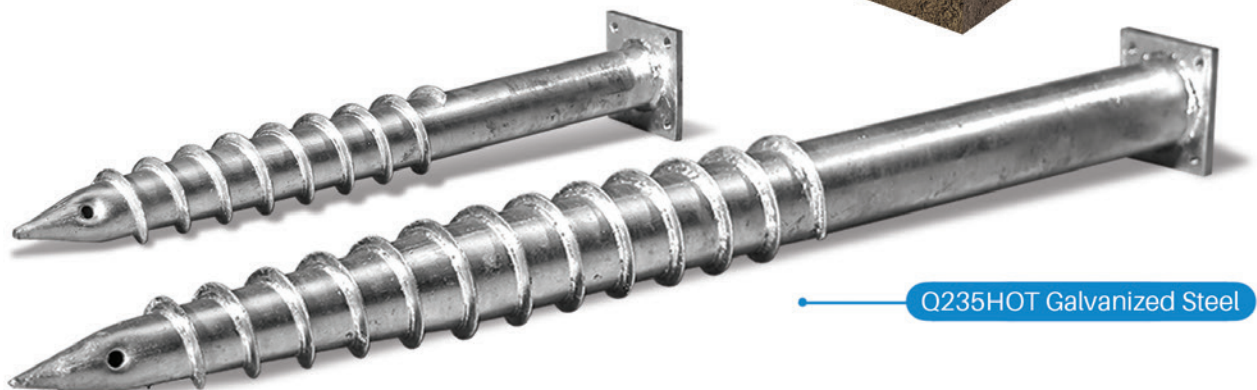


Ground Screws

Ensure efficient hassle free pile foundations with J-Vice® ground screws & fixings specifically designed to support timber frames under NZ3604.



Efficient systems made even easier.



Our SGP beam screws provide a standard pile foundation with a convenient fixing bracket for timber beams up to 95mm wide. These are available in a variety of lengths to enable installation in different types of ground conditions and topography.

Our larger SGP adapter screw, typically used for house foundations, is also suitable for commercial decking with higher load requirements, or to overcome very poor ground conditions.

Product Range

Product Code

Ground Screw 65x700mm HDG Square Flange 110x110

JVGS65/700SQFL

Ground Screw 76x1000mm HDG Square Flange 110x110

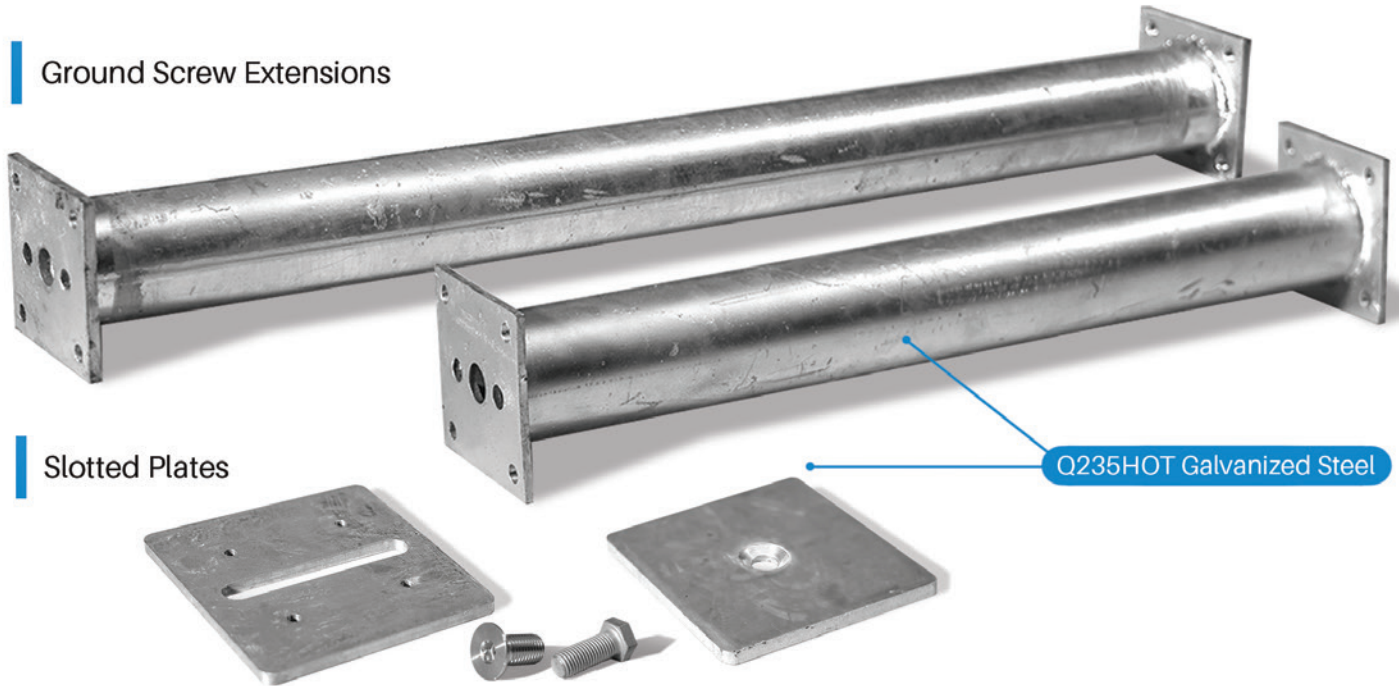
JVGS76/1000SQFL

Ground Screw 76x2000mm HDG Square Flange 110x110

JVGS76/2000SQFL

Ground Screws Accessory Systems

Ground Screw Extensions



Slotted Plates

Accessories designed to keep it simple.

Ground Screw Accessory Systems Product Range

Product Code

300mm Extension	76x300 L=300mm Square Flange 110x110mm	JVGS76/300SQFL
600mm Extension	76x600 L=600mm Square Flange 110x110mm	JVGS76/600SQFL
900mm Extension	76x900 L=900mm Square Flange 110x110mm	JVGS76/900SQFL
Slotted Plate 102/70	Square plate 200x200mm with slot, 102/70mm thread hole distance, 10mm thickness	JVGS200/200SLT102/70
Slotted Plate 90/90	Square plate 200x200mm with slot, 90/90mm thread hole distance, 10mm thickness	JVGS200/200SLT90/90
Slotted Plate 98/98	Square plate 200x200mm with slot, 98/98mm thread hole distance, 10mm thickness	JVGS200/200SLT90/90
Slotted Plate 110/110	Square plate 200x200mm with slot, 110/110mm thread hole distance, 10mm thickness	JVGS200/200SLT110/110
Galv Bolt & Square washer	Galv bolt M20x50mm bolt and square washers 37x37x3mm for the slotted plate	JVGS20/50BLTWSHRGVN
Galv Bolt and Hex Nut	Galv bolt M10x40mm bolt and hex nut, 2 pc washer, 1pc spring washer for extension pillar.	
Drill Machine	Drill Machine WE-06, the head should match square flange 110x110mm	

NOTES



PRODUCTS & SPECIFICATIONS

BUILT ON
COMMON SENSE



www.j-vice.com

Email : info@glassvice.com | Phone : 0800 700 797 | Showroom : 24C William Pickering Drive, Rosedale, 0632, Auckland