

# J-VICE®

## Joist hangers

**Almost install themselves.**

**J-Vice joist hangers are available in three sizes in either stainless or galvanised options.**



**JVJH90SS**

For use on gauged 47mm wide timber up to 150mm depth.  
Use stainless steel option in exterior situations.



**JVJH140GALV  
&  
JVJH140SS**

For use on gauged 47mm wide timber up to 200mm depth.  
Use stainless steel option in exterior situations.



**JVJH190GALV  
&  
JVJH190SS**

For use on gauged 47mm wide timber up to 300mm depth.  
Use stainless steel option in exterior situations.

**J-Vice hanger type to be used with joist spans from NZS 3604:2011 tables.**

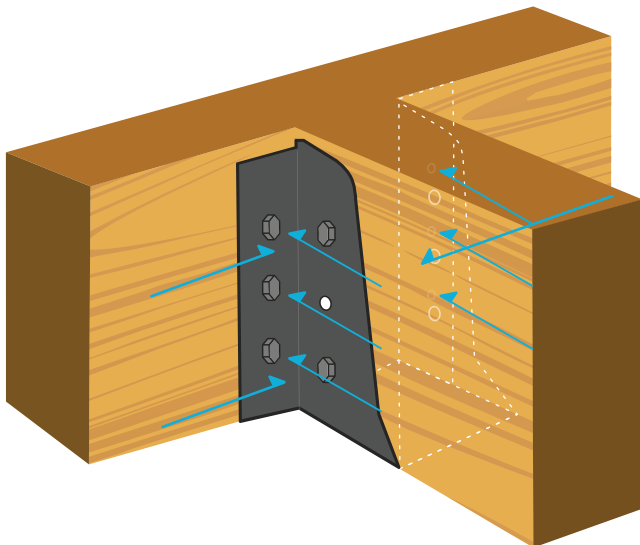
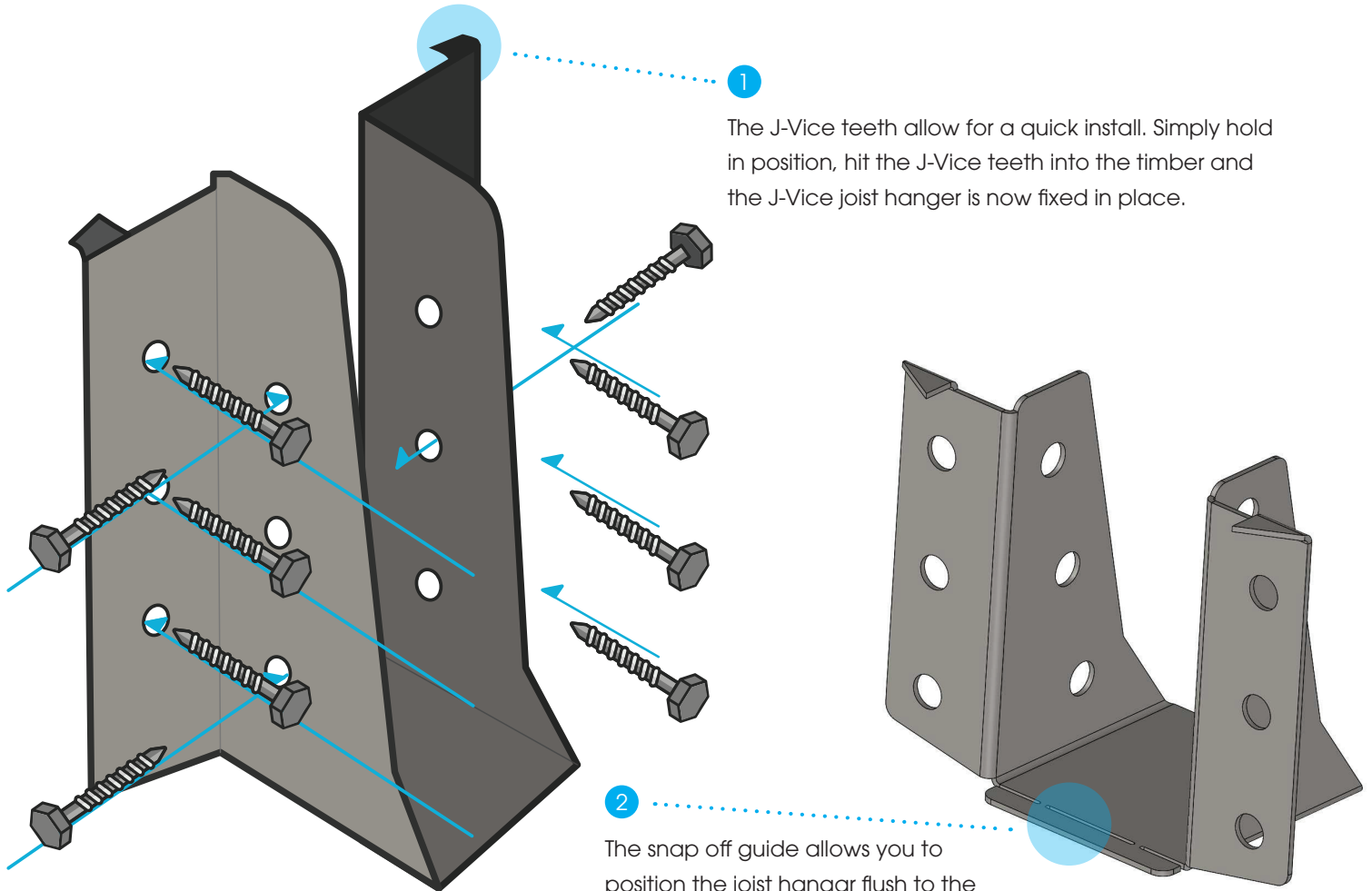
Detailed testing & specifications available on request.

Table number	7.1	7.1	14.8
Imposed load	1.5kPa	2kPa	3kPa
Maximum spacing of joist	450	450	450
Joist size			
90x45	JVJH90	JVJH90	JVJH90
140x45	JVJH140	JVJH140	JVJH140
190x45	JVJH190	JVJH190	JVJH190
240x45	JVJH190	JVJH190	JVJH190
290x45	JVJH190	JVJH190	JVJH190

# J-VICE®

## Joist hangers

**Almost install themselves.**



### Screw fixing recommendation.

- Use 3 screws per flange for the bearer (6 total).
- Use 1 screw for one flange, and 2 on opposite flange for the joist (3 total). As shown in diagram.
- Type 17, 14g hex-head stainless-steel screws available in 44mm, 88mm and 125mm.
- Type 17, 14g hex-head galvanised screws available in 44mm.

NZ patent pending NZ738681  
Reg Design NZ423068